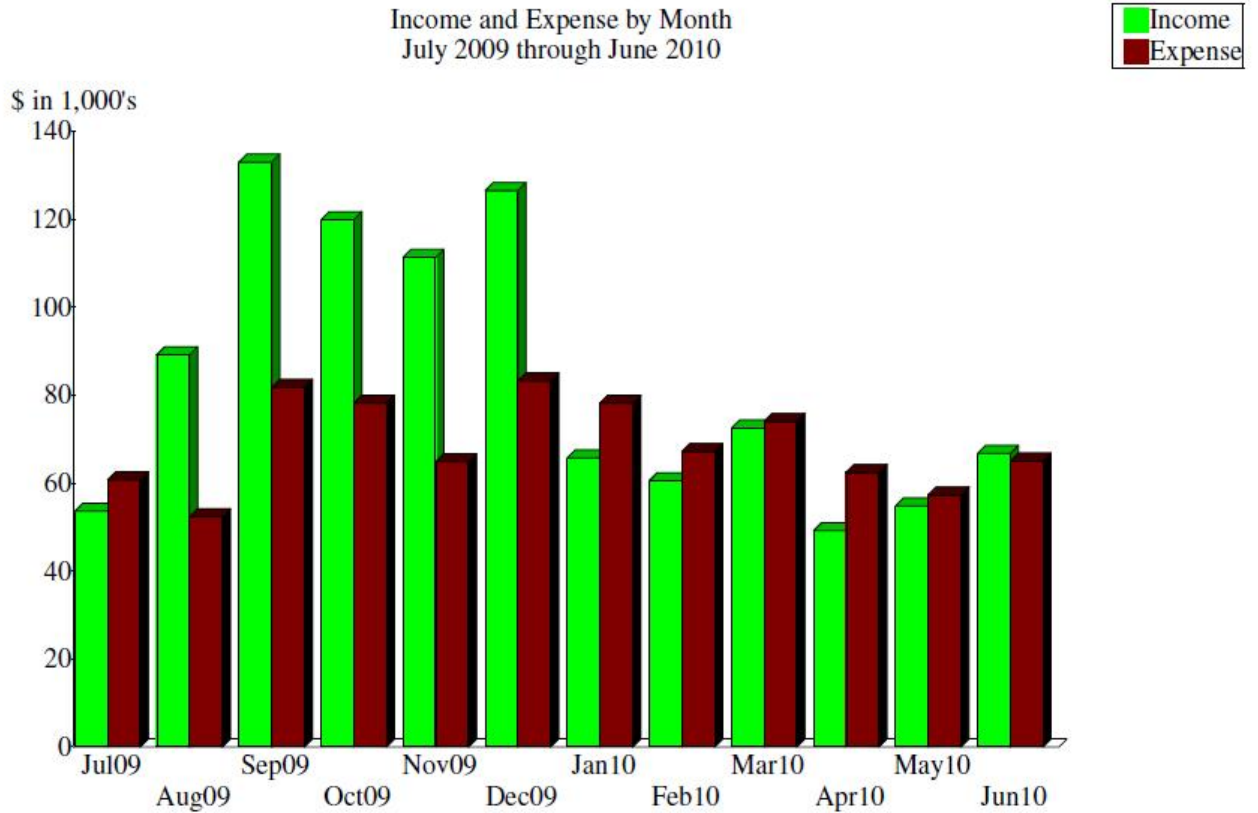


## Blessed Sacrament Church 2009-2010 Annual Financial Report

Below please find a summary of the finances for Blessed Sacrament Parish for the fiscal year ending June 30, 2010. The graph indicates revenues and expenses for each month of the year. The pie chart breaks out by percentage the expenses in the nine largest categories.

Five volunteer parishioners comprise the Finance Committee and assist Father Tim in the financial administration of the parish. Questions and or comments are always welcome. Every effort will be made to respond in a timely fashion. Should you have questions, please feel free to mail the committee at [fincom@blessedsacrament.org](mailto:fincom@blessedsacrament.org).



Expense Summary  
July 2009 through June 2010

■	5001-00 · EXEMPT SALARIES	%28.62
■	5201-00 · CLERGY STIPEND	8.07
■	8450-01 · CHR Transfer to School	4.85
■	6500-00 · PASTORAL / LITURGICAL	3.42
■	6204-00 · BOOKS & PAMPHLETS	3.33
■	5002-00 · NON EXEMPT SALARIES	3.28
■	5102-00 · LAY HEALTH INSURANCE	3.23
■	5203-00 · CLERGY HEALTH INSURANCE	2.91
■	5101-00 · EMPLOYER'S FICA	2.80
■	6250-00 · HOUSEHOLD	2.74
■	Other	36.75
Total		\$825,294.48

